



Big Data, Internet of Things, Apps: quali implicazioni per il mondo del farmaco e il settore salute

Data & Cognitive Challenge
Cristina Ingrassia – IBM Italia

Milano, **29 Novembre 2016** ore 14.30-17.30
sala Falck - Assolombarda Confindustria Milano Monza e Brianza



Founded
1911

Location
175 Countries

380.000
employees

Revenues 2014
81.7\$B

IBM in the World



Head Quarter
Armonk, NY

www.ibm.com

*We create business value for enterprise clients
through integrated solutions that
leverage innovative IT and deep business insights*

IBM in Italy



Present since
1927

Presence
13 Locations

6.000
employees

Revenue
2015
1.94M€



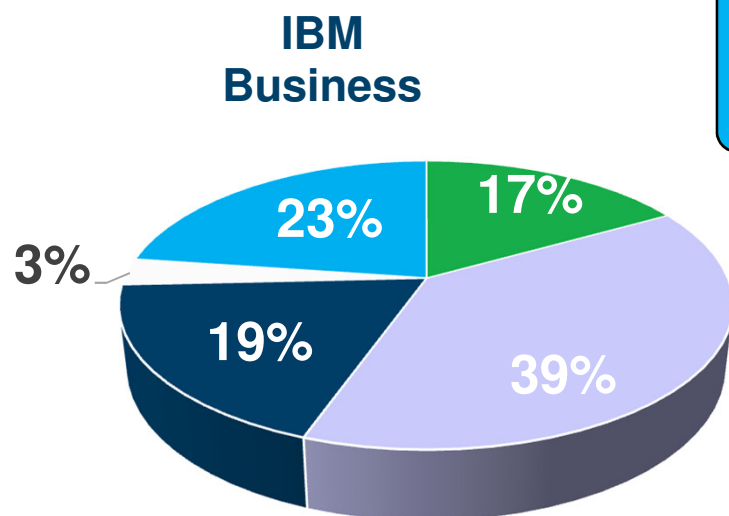
Head Quarter
Segrate (MI)

www.ibm.com

Innovation in SMEs
Development activities in advanced areas
Campus Data Center
Collaboration with universities
Social and cultural programs through the
IBM Italia Foundation (25 years activity)

IBM ... do you know ...

IBM is one of the the largest services provider



Software Solutions

- Analytics
- Security
- Social
- Mobile
- Cloud

Middleware Sytemes

- Host Tools & Compilers
- Legacy Transaction Processing
- Comm. Servers
- Storage

Operating Systems

Product Lifecycle Management

Global Technology Services

- Strategic Outsourcing
- Business Transformation Outsourcing
- Integrated Technology Services
- Maintenance

Global Business Services

- Strategy and Transformation Services
- Business Analytics and Optimization Services
- Enterprise Applications Services
- Application Services

Systems & Technology

- Servers
- System z
- System i
- System p
- System x
- Storage Technology
- Microelectronics
- Eng & Tech Services

... Big Data ?

A new era in technology, a new era in business

For the first time in history, the **volume of data and information** we're producing has outpaced our ability to make use of it

This catalyst marks **change** in the technological world, from systems programmed to systems trained to think

this era we refer to is a cognitive one

... Why ???



Source: <http://www.bloomberg.com/video/meet-the-world-s-most-connected-man-Vs~LzkbkR7yhjza~7nji1g.html>



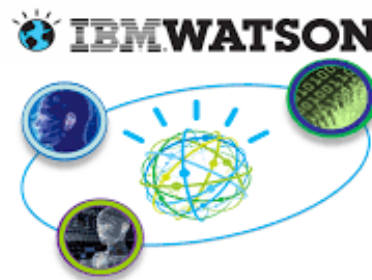
IBM's Cognitive Value Proposition



What is Watson?
The Face of Watson



“**Watson**” is the **brand** for **IBM's cognitive capabilities**. Watson is used by IBM's businesses, offerings, services and solutions that directly build cognitive abilities for business



“Watson” is the most sophisticated **cognitive technology** designed to support a broad range of expertise delivered on an **open** platform by devoting our talent and innovation to enable customer driven growth

Watson: a Cognitive System – What is ?

Is not programmed, it's trained



Understand

Adapt and make sense of all data;
“read” text, “see” images and
“hear” natural speech with
context



can **make sense** of the 88%
of **dark data** that exists

Reason

Interpret information, organize it and
offer explanations of what it means,
with rationale for the conclusions



does not give pre-determined
responses but is probabilistic. It
generates **hypotheses, reasoned
arguments and recommendations**

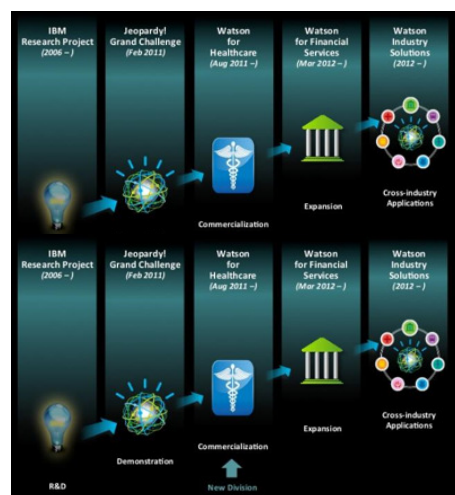
Learn

Accumulate data and derive
insight at every interaction,
perpetually



learns and reasons from
interactions with us and
from **experiences** with the
environment

IBM Watson some insights



2011

Won national TV show
Jeopardy

2012

first **applications** in Healthcare
and Financial Services Sector

2014

launched **IBM Watson Group**:
invested \$1B, based NYC and
San Francisco

started **Watson University**
(100 Universities)

2015

launched **Watson Health**
division based in Boston

launched **Cognitive Business
Solutions Unit**, Global
Presence



More than **1500
active patents** in
the cognitive area
owned by IBM

IBM is the largest
cognitive computing
organization: all IBM
Watson units employees
are **>6.000**

Invested \$100M to develop
Watson Ecosystem (+100
companies)

IBM Watson is available on the market

Applications

Watson Engagement Advisor

Interacts with customers
(Q&A)

Watson Knowledge Studio

To understand the market

Watson Discovery Advisor

Cognitive to Research &
Development

Watson for Wealth Management

Banking Cognitive Application

Watson Chef

Cooking Cognitive Application

Healthcare / Lifesciences

Watson Clinical Trial Matching

Cognitive to match/coordinate clinical test

Watson Health Utilization Management

To optimize Healthcare costs

Watson for Oncology

For evidence-based analysis on patient
and Treatments

Watson Genomics Advisor

Insights on DNA sequence for cancer
research

Watson Analysis of Medical Images

From Merge & Truven acquisition

Products

Watson Explorer

To analyze structured and
unstructured business contents

Watson Analytics

Predictive analysis with

Watson Curator

To increase answers accuracy

Platform for Ecosystem

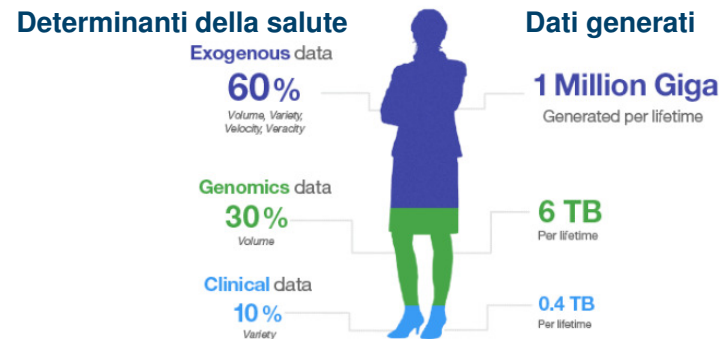
Watson Developer Cloud

API to build Apps powered by
Watson



Cognitive Computing need on Healthcare and Lifesciences

Healthcare informations are increasing
faster than the clinical capability to use them



Highest complexity

A doctor will evaluate 100 variables on 2020, 1.000 on 2025

Remedy rarely based on evidence

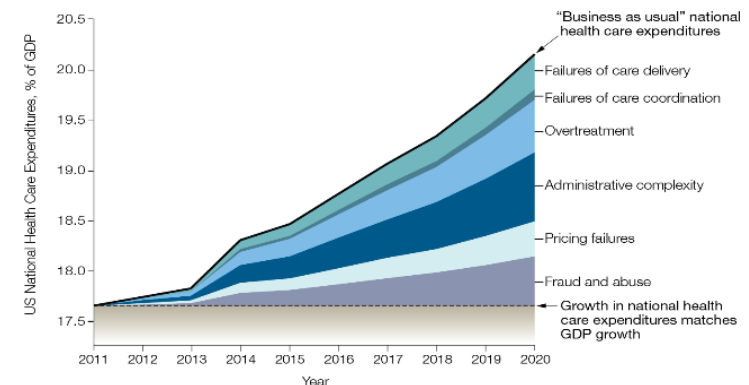
Less than 50% of health remedy are based on «evidences».

A epidemiologist should study 167 hours a week to be continuously updated on new discoveries.

Heterogenous unstructured data

80% of health data are unstructured

Current Healthcare System
is not economically sustainable



High Gap on accuracy of prescribed remedies

44% of first cancer treatments will be successively modified

Growing Demand

Healthcare services demand will grow of 42% in 2025 (oncologist lack)

Progressively Ageing Population


In Europe Old-age Dependency Ratio (people >65 yrs vs working population) will move from 30% to almost 50% in 2060

IBM Watson Health // ©2015 International Business Machines Corporation // SOURCES

- Journal of Clinical Oncology, Talk about Health Blog, Sept 2011
- www.economist.com/blogs/babbage/2013/02/computer-aided-medicine
- 2015 Global Health Care Outlook Common Goals, Competing Priorities. Rep. Deloitte, 2015. Web. 16 June 2015.

IBM Watson Health // ©2015 International Business Machines Corporation // SOURCES

- UN World Population Prospects: The 2012 Revision.
- Roeder, Amy. Reducing Wasteful Health Care Spending Begg the Question, What Is Waste? Harvard
- 2015 Global Health Care Outlook Common Goals, Competing Priorities. Rep. Deloitte, 2015. Web. 16 June 2015.
- "Health Policy Brief: Reducing Waste in Health Care," *Health Affairs*, December 13, 2012.



In the world
30% of 1\$ paid
in Healthcare
is wasted

* Roeder, Amy. Reducing Wasteful Health Care Spending Begs the Question, What Is Waste? Harvard, T.H. Chan School of Public Health. Harvard, T.H. Chan School of Public Health. August 2014

Introduction to Watson Health

Healthcare – The IBM Moonshot

“I'm telling you, our **moonshot** will be the impact we will have on Healthcare. It has already started. We will change and do our part to **change the face of Healthcare**. I am absolutely positive about it. And that, to me, while we do many other things, that will be one of the most important.”



Ginni Rometty

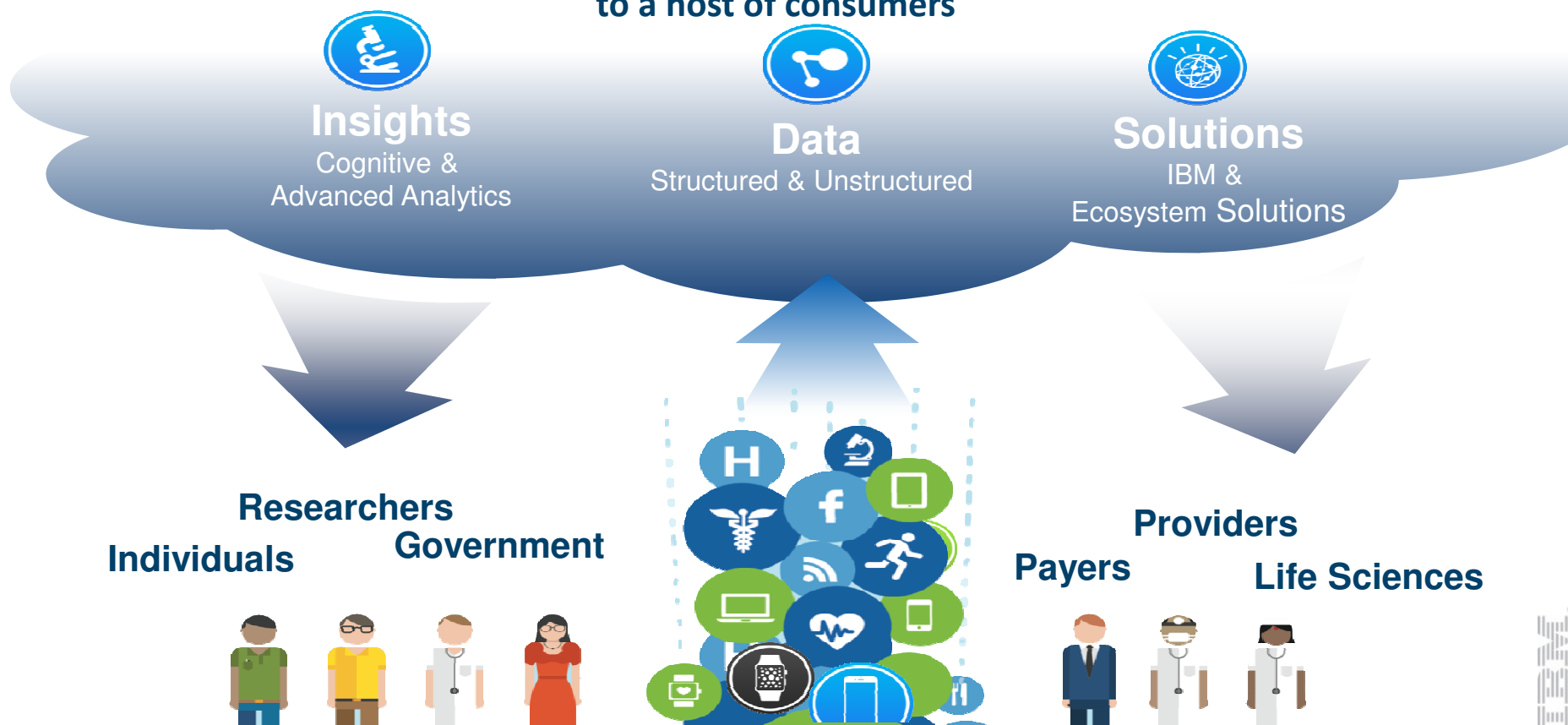
April 16, 2015

https://www.youtube.com/watch?v=yV_6sd32oW0



Watson Health ... what is ?

a platform that is HIPAA enabled, standards based and massively scalable to enable insight to a host of consumers



IBM investment of 4 mld\$ in Watson Health

Acquisition



1 mld\$ for MERGE World Healthcare leader in **medical images solutions since more than 20 yrs** for 7.500 medical institutes and most important research centres



Explorys acquisition to progress **analytical skill on healthcare area**: 315 billion of clinical data, 50 millions of patients, 360 hospitals and more than 317.000 doctors.



Phytel acquisition to empower the **quality and the effectiveness of personal healthcare** through the access to millions of information on different health items of world population.



IBM **Cúram** Child Welfare is a **software for younger protection** which gives you a complete solution for the whole life cycle of organization which takes care of childhood assistance..



2,6 mld \$ to buy **Truven**, an analytical company of healthcare area with more **than 8.500 customers among main pharmaceutical companies**, research institutes and government agencies.



IBM & Memorial Sloan Kettering of NY (**Cancer Center most famous in the world**) **created together Watson for Oncology** to build up knowledge and medical understanding to elaborate personalised therapies for breast, lung and colon cancer.



Novo Nordisk and IBM are working together to create **solution against diabetes** on Watson Health Cloud.



NY Genome Center **thanks Watson acceleration on genome knowledge** is trying to fight cancer and other life-threatening diseases with personalized therapies on DNA profile



IBM and American Heart Association are **developing a solution Watson based to reduce cardiovascular disease** (Workplace Health Achievement Index)



Partnership with Apple to provide a secure platform on cloud and analytics for **HealthKit** and Apple **ResearchKit**.



Johnson & Johnson is working with IBM to create **intelligent coaching systems**, focusing on pre / post - operative patient care on articular prosthesis and spinal surgery .



Innovative experiences



App **Under Armour**
Record (4,5m users):
Personal Health
Consultant based on
Cognitive Coaching
System



Bumrungrad
International Hospital:
5 years agreement
to use Watson for
Oncology



MD Anderson has a
solution powered by
Watson **for clinical**
leukaemia and molecular
therapies



Mayo Clinic is using
Watson to manage
efficiently the program
of **Electronic Health**
Record



IBM Watson and
MEDTRONIC: solution to
defeat diabetes and to
foresee hypoglycemia 3
hours in advance



The chain of drugstores
CVS is using Watson to
predict chronic disease
based on the reporting of
dangerous behaviours



Teva has chosen IBM Watson Health
as a global technical **platform to**
offer solutions to millions of
chronic asthma sufferers, migraine
and neurodegenerative diseases..



At **Baylor College of Medicine** in
Texas, Watson studied in 10 days
70.000 scientific articles on p53 and
identified 6 potential proteins
proteine "indicted"
= 38 years/man



Cristina Ingrassia
Partner – Lifesciences Industry Leader
IBM Italia
Cristina.Ingrassia@it.ibm.com
3357779107